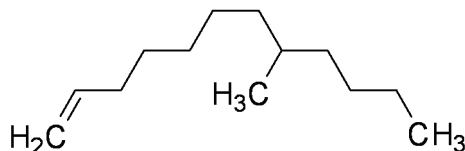




## Certificate of Analysis

Structure:



**Product Number** BM1740  
**Batch Number** M17401806  
**Product Name** 8-Methyldodec-1-ene (contains 8-ethylundec-1-ene)

**CAS Number** N/A  
**Molecular Formula** C<sub>13</sub>H<sub>26</sub>  
**Molecular Weight** 182.35 g / mol

ANALYSIS	SPECIFICATION	RESULTS
<b>Appearance</b>	Colourless to yellow oil	Colourless oil
<b>GC - Ethyl acetate</b>	≥95%	98.0%
<b>NMR - CDCl<sub>3</sub></b>	≥95%	≥97%
<b>Notes</b>	<i>Purity: sum of isomeric materials (8-methyldodec-1-ene and 8-ethylundec-1-ene is ≥95%</i>	
<b>Storage Conditions</b>	Store ≤ 25°C	

Prepared by:

  
Signature

Gary Schmidt

16/05/2018

Print Name

Date

Checked by:

  
Signature

Justine Walter

16/05/2018

Print Name

Date

### UNITED STATES

Boron Molecular Inc  
P.O. Box 12592  
Research Triangle Park, NC 27709  
Tel: (919)-981-4441 Fax: (919)-981-4442  
Email:sales@boronmolecular-usa.com

### AUSTRALIA

Boron Molecular Pty Limited  
P.O. Box 756  
Noble Park, Victoria, 3174  
Tel: 61-3-8558 8000 Fax: 61-3-8558 8004  
Email:sales@boronmolecular.com